



**SHARPLIGHT™**  
the beauty of your success



# UNLEASH THE POWER OF LIGHT

- ▶ Varicose veins
- ▶ Spider veins
- ▶ Erythema
- ▶ Rosacea
- ▶ Broken capillaries

## RAPIDVANISH



# RAPIDVANISH

The Rapid Vanish is an aesthetic workstation dedicated to the treatment of vascular lesions. The system uses two powerful technologies- the Long Pulsed Nd: YAG 1064 Laser and Dynamic Pulse Control™ (DPC). The LP laser is best suited for deeper lesions such as varicose veins, while the DPC optimally treats the more superficial lesions such as broken capillaries. Used separately or in combination, the technologies provide you with a complete solution for treatment of both facial and body vascular lesions.

## **Treatment with the Rapid Vanish is:**

- ▶ **Fast, with visible results from the first treatment**
- ▶ **A no downtime, 'Lunch-time' procedure**
- ▶ **Effective on all skin types**
- ▶ **Clinically proven safety and efficacy**
- ▶ **Non-invasive**

The Rapid Vanish is part of a new business approach by SharpLight: as opposed to all-in-one systems capable of treating a wide variety of indications, the Rapid Vanish is focused on treating a singular indication-vascular lesions. Using a dual technology platform of LP 1064 laser and DPC, a broad range of vascular lesions can be treated. The advantage of the Rapid Vanish is that it is more affordable, and is therefore attractive for practices starting off in the aesthetic field that want to gradually grow their business. It is also an ideal solution for practices that want to add laser and DPC

technologies to their existing treatment portfolio. Most importantly, with the Rapid Vanish no capabilities go unused. As opposed to multi-technological platforms in which the rest of the technologies are dormant while you use your technology of choice, with the Rapid Vanish you will utilize 100% of its capabilities.

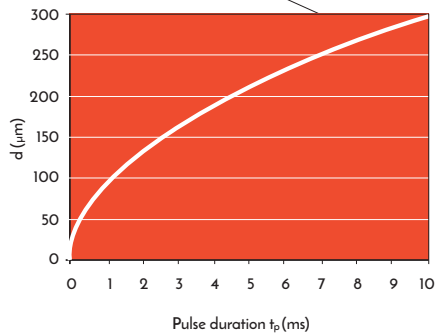
Best of all, with the Rapid Vanish you can enjoy a fast return on your investment. The system enables you to effectively meet the ever-growing demand for removal of unwanted vascular lesions. You can easily attract new patients to your practice and offer existing ones exciting new treatment alternatives.

Designed with the needs of your practice in mind, the Rapid Vanish has a sleek modern design and a small footprint. Its state-of-the-art graphic user interface is intuitive and easy to use, ensuring fast and safe treatments.

## *Advantages of the LP Laser*

The longed pulsed Nd:YAG Laser delivers a powerful 1064 nm wavelength for treatment of a broad range of vascular lesions. The advantage of the long pulse is twofold: first, it has a greater depth of penetration, and can therefore reach lesions in the deeper dermal layers, which the shorter wavelengths cannot reach. Second, the laser heats the target area more uniformly than the shorter wavelengths, with higher absorption coefficients.





Long Pulsed Nd:YAG Laser 1064

▼  
*"I made a strategic business decision to expand my treatment portfolio and start removing vascular lesions. I chose the Rapid Vanish since I wanted a workstation that could be dedicated to this application. The decision has been a successful one, and thanks to the Rapid Vanish, I have been able to attract many new patients to my practice."*

Dr. Michael Shohat M.D, Aesthetic & Laser clinic ,Israel



## The DPC Difference

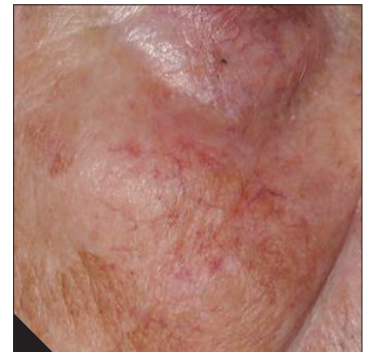
Dynamic Pulse Control (DPC) technology is SharpLight's flagship technology and is an advancement of IPL. It is unique since it allows you to use optimal protocols with high energy level that translate to shorter treatment sessions. The DPC has three pulse configurations: smooth, long and high pulses.

## The Rapid Vanish Hand Pieces:

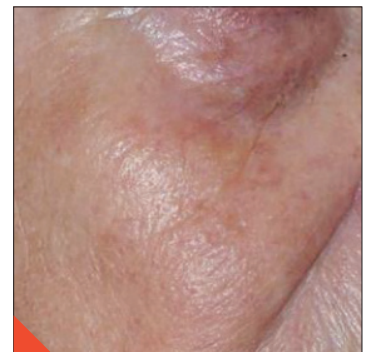
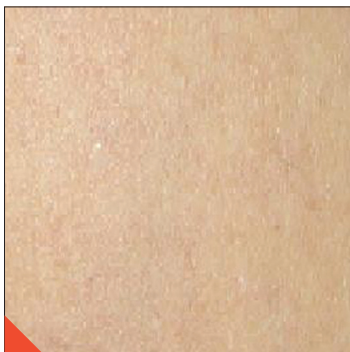
**LP Laser hand piece:** The hand piece is ideal for treatment of the body and has two spot sizes 3 cm<sup>2</sup> and 6 cm<sup>2</sup>. During treatment the laser light targets the intravascular hemoglobin and oxy-hemoglobin chromophores. The thermal effect induces selective photothermolysis of the chromophores, and as a result, the vessel is blocked, leading to the disappearance of the lesion and the restoration of the skin's natural appearance. Importantly, since the LP laser has a lower absorption coefficient of melanin chromophores, risk of epidermal damage is reduced, and treatment is safer for patients with dark skin.

**DPC hand piece:** The Dual VP DPC hand piece is the perfect solution for treatment of a wide variety of facial vascular lesions. In order to easily treat the facial contours, it has a spot size of 1.5 cm<sup>2</sup>. The hand piece emits two wavelengths simultaneously- 535-680nm and 860-1200nm. Within these spectrums the oxyhemoglobin and deoxyhemoglobin chromophores best absorb the light energy and the vessel is coagulated.

Before



After



Number of treatments:2

Number of treatments:4

Number of treatments:2

# SPECIFICATIONS

- ▶ **Energy:** up to 350J/cm<sup>2</sup>
- ▶ **Repetition rate:** up to 1HZ
- ▶ **Pulse duration:**
  - LP Laser: 10-30ms
  - Dual VP: 10-25ms
- ▶ **Spot size:** up to 1HZ
  - LP Laser - 3/6mm
  - Dual VP: 1.5cm<sup>2</sup>
- ▶ **Cooling system:** Water cooling system, contact cooling tip security control

## ABOUT SHARPLIGHT

SharpLight Technologies Ltd. designs and manufactures non-invasive aesthetic medical solutions for treatment of a broad range of applications such as stretch marks, tattoo removal, body contouring, cellulite, circumferential reduction, vascular lesions and scars. The company is an expert in the aesthetic field and its proprietary DPC™ technology has redefined treatment effectiveness, comfort and speed. SharpLight offers a full line of stand-alone and multi-technology aesthetic systems powered by DPC, RF, Vermaderm™ and Laser Technologies.

For more information visit **SharpLightTech.com**



**SHARPLIGHT**

SharpLight Technologies Ltd.  
33 Lazarov St. Rishon Le Zion 7565435, Israel  
T: +972.3.961.1969 | F: +972.3.952.8890 | E: info@sharplighttech.com



**SHARPLIGHT™**  
the beauty of your success



# UNLEASH THE POWER OF LIGHT

- ▶ Varicose veins
- ▶ Spider veins
- ▶ Erythema
- ▶ Rosacea
- ▶ Broken capillaries

## RAPID**VANISH**